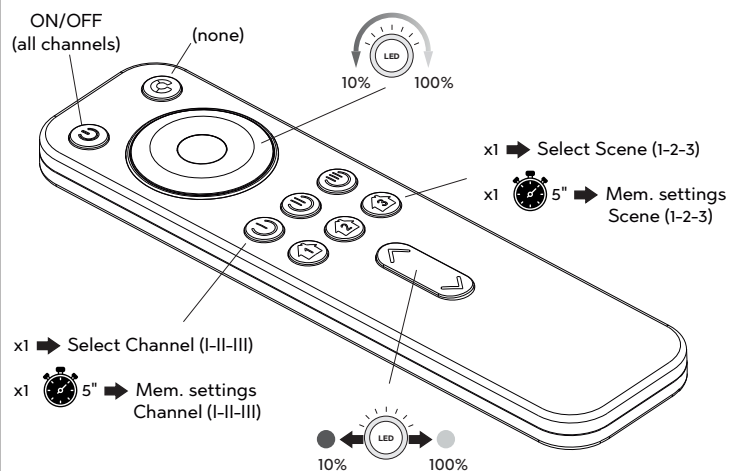
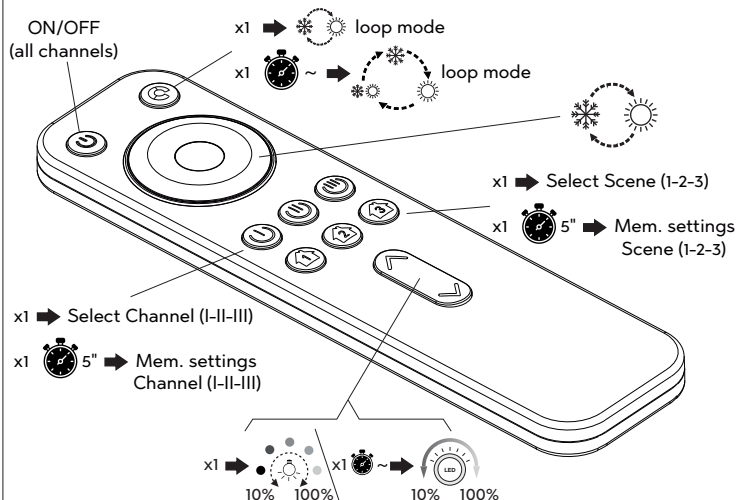




## RC3 single colour functions



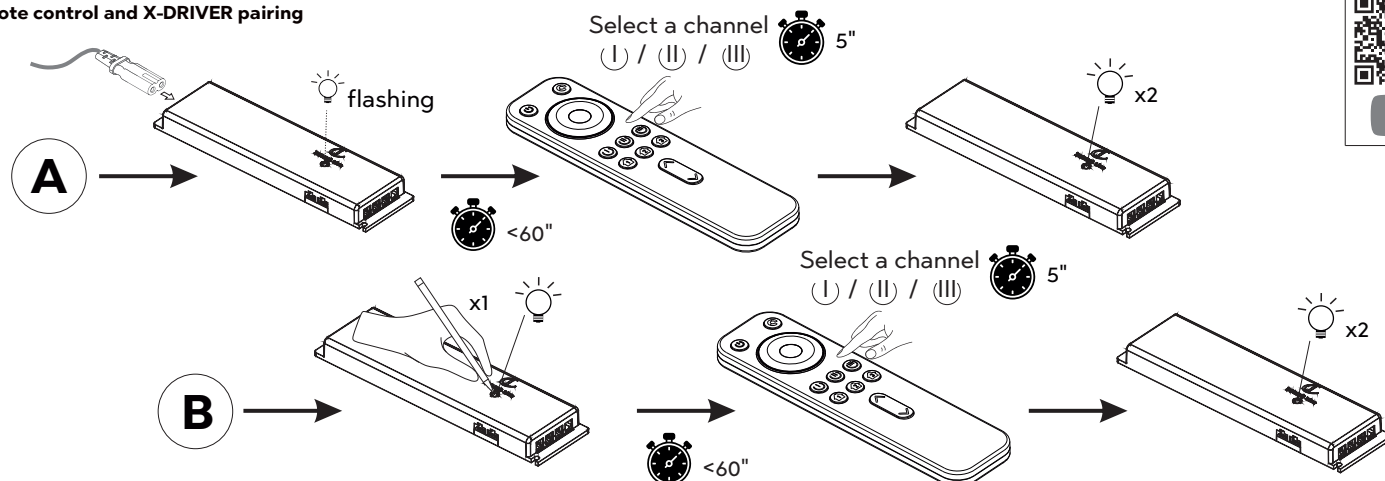
## RC3 dual colour D-Motion functions



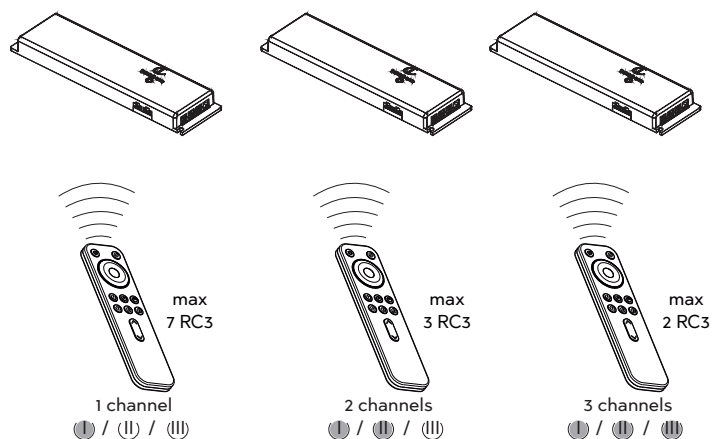
## RC3 + X-DRIVER + CM2-XD



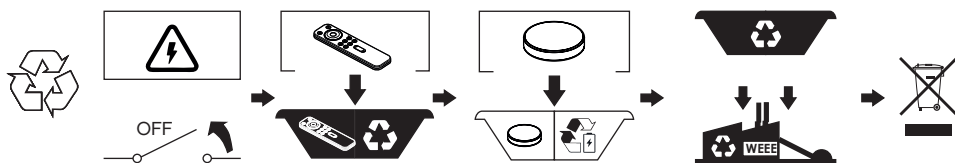
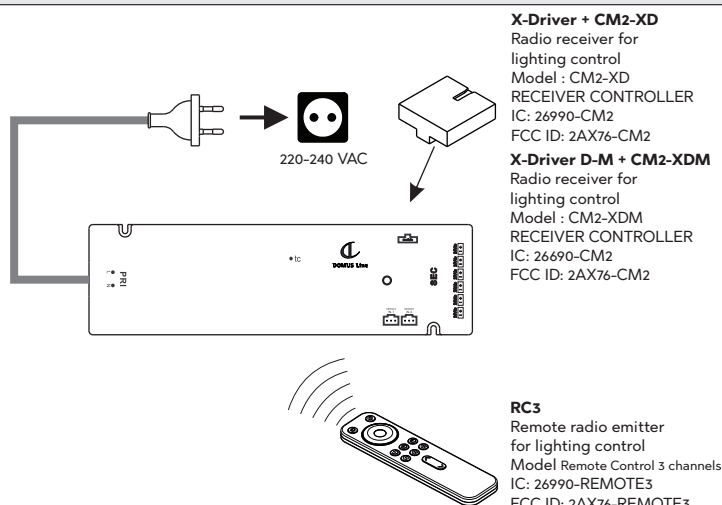
### Remote control and X-DRIVER pairing



## RC3 + X-DRIVER setup



## RC3 + X-DRIVER (D-M) SETUP



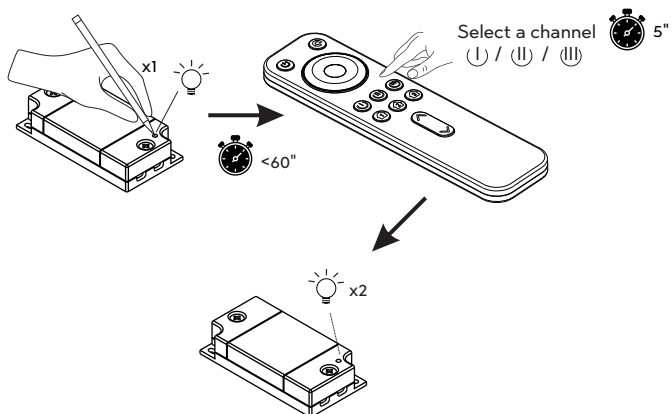
RC3



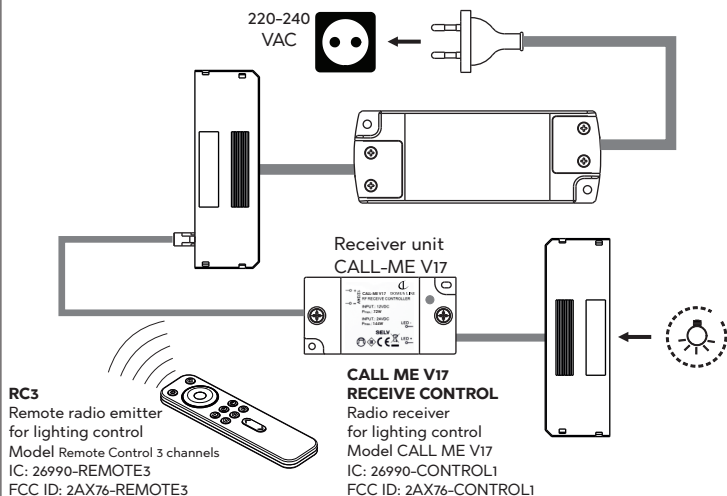
## RC3 + CALL ME RECEIVER



### Remote control and receiver pairing



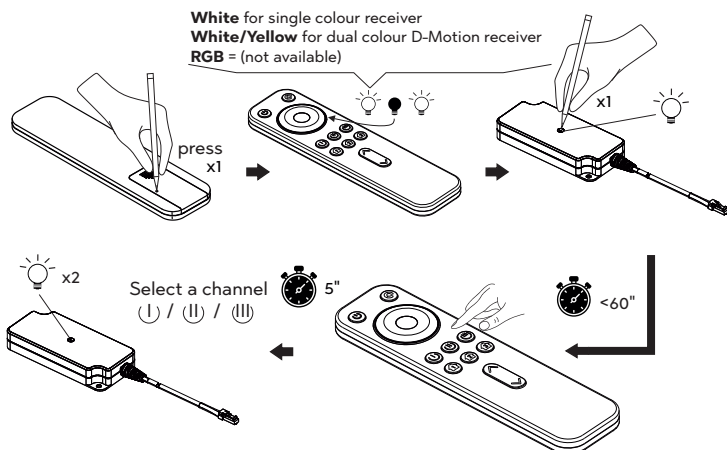
## RC3 + CALL ME RECEIVER



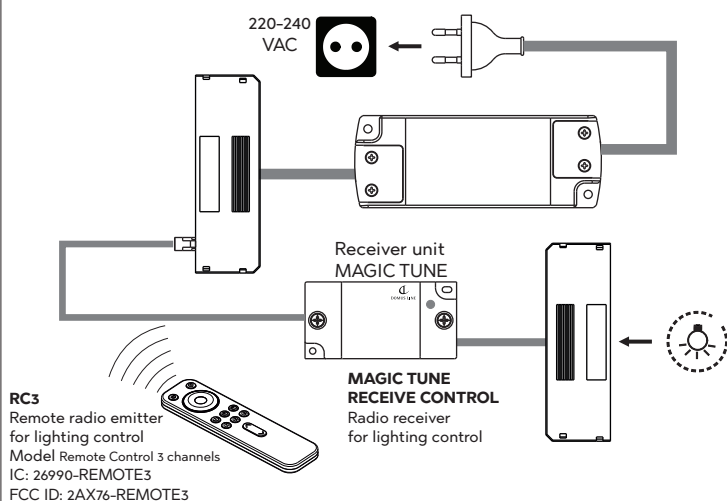
## RC3 + MAGIC TUNE RECEIVER



### Remote control and receiver pairing



## RC3 + MAGIC TUNE RECEIVER

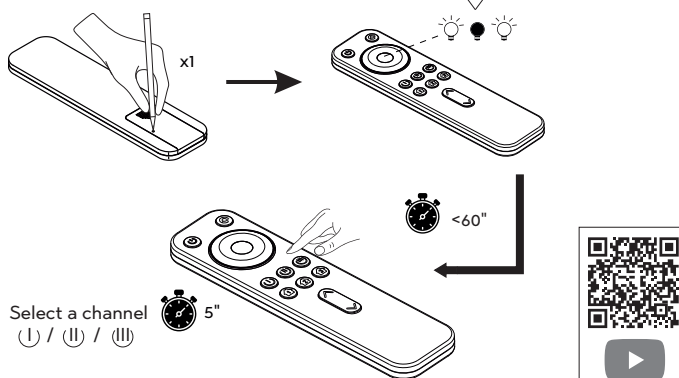


## RC3 SETUP

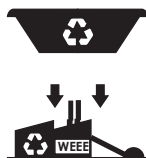
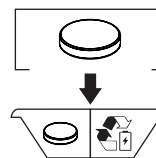
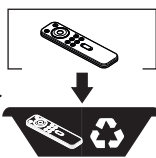
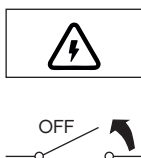
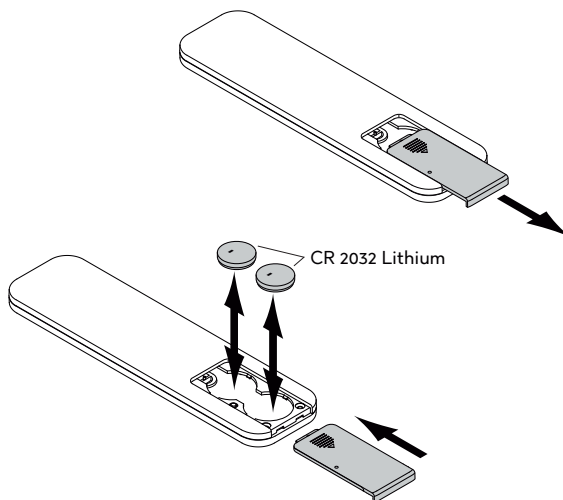


### Remote control matched transmitter

White for single colour receiver  
White/Yellow for dual colour D-Motion receiver  
RGB = (not available)



## RC3 BATTERY REPLACEMENT



RC3